



TEL:4006-871-227 Web:www.ybio.net Email:shybio@126.com

YBJ867Hu01 100 μ g

Recombinant Achaete Scute Complex Like Protein 1 (ASCL1)

Organism Species: Homo sapiens (Human)

*Instruction
manual*

FOR IN VITRO USE AND RESEARCH USE ONLY

NOT FOR USE IN CLINICAL DIAGNOSTIC PROCEDURES

10th Edition (Revised in Jan,
2014)

[PROPERTIES]

Residues: Lys84~Phe236

Tags: Two N-terminal Tags, His-tag and T7-tag

Accession: P50553

Host: *E. coli*

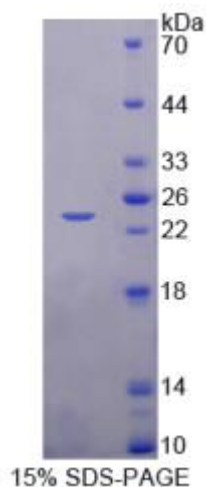
Subcellular Location: Nucleus.

Purity: >95%

Endotoxin Level: <1.0EU per 1 μ g (determined by the
LAL method).

Formulation: Supplied as lyophilized form in PBS, pH7.4,
containing 5% trehalose, 0.01% sarcosyl.

Predicted isoelectric point: 9.1 Predicted Molecular



The possible reasons that the actual band size differs from the predicted are as follows:

Mass: 20.9kDa

Accurate Molecular Mass: 24kDa as determined by SDS-PAGE reducing
conditions. Applications: SDS-PAGE; WB; ELISA; IP.

(May be suitable for use in other assays to be determined by the end
user.)



TEL:4006-871-227 Web:www.ybio.net Email:shybio@126.com

Note:

1. Splice variants: Alternative splicing may create different sized proteins from the same gene.
2. Relative charge: The composition of amino acids may affects the charge of the protein.
3. Post-translational modification: Phosphorylation, glycosylation, methylation etc.
4. Post-translation cleavage: Many proteins are synthesized as pro-proteins, and then cleaved to give the active form.
5. Polymerization of the target protein: Dimerization, multimerization etc.

[USAGE]

Reconstitute in sterile PBS, pH7.2-pH7.4.

[STORAGE AND STABILITY]

Storage: Avoid repeated freeze/thaw cycles.

Store at 2-8°C for one month.

Aliquot and store at -80°C for 12 months.

Stability Test: The thermal stability is described by the loss rate of the target protein. The loss rate was determined by accelerated thermal degradation test, that is, incubate the protein at 37°C for 48h, and no obvious degradation and precipitation were observed. (Referring from China Biological Products Standard, which was calculated by the Arrhenius equation.) The loss of this protein is less than 5% within the expiration date under appropriate storage condition.

[SEQUENCES]

The sequence of the target protein is listed below.

KQVKRQR SSSPELMRCK RRLNFSGFGY SLPQQPAAV ARRNERERNR VKLVNLGFAT
LREHVPNGAA NKKMSKVETL RSAVEYIRAL QQLLDEHDAV SAAFQAGVLS PTISPYSND
LNSMAGSPVS SYSSDEGSYD PLSPEEQELL DFTNWF