



TEL:4006-871-227 Web:www.ybio.net Email:shybio@126.com

YBE100Hu01 100 μ g

Recombinant Protocadherin 20 (PCDH20)

Organism Species: Homo sapiens (Human)

Instruction manual

FOR IN VITRO USE AND RESEARCH USE ONLY

NOT FOR USE IN CLINICAL DIAGNOSTIC PROCEDURES

10th Edition (Revised in Jan, 2014)

[PROPERTIES]

Residues: Arg64~Phe209

Tags: Two N-terminal Tags, His-tag and T7-tag

Accession: Q8N6Y1

Host: *E. coli*

Subcellular Location: Cell membrane; Single-pass
type I membrane protein.

Purity: >95%

Endotoxin Level: <1.0EU per 1 μ g (determined by the
LAL method).

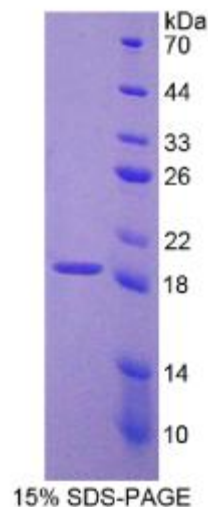
Formulation: Supplied as lyophilized form in PBS, pH7.4,
containing 5% trehalose, 0.01% sarcosyl.

Predicted isoelectric point: 4.7

Predicted Molecular Mass:

19.4kDa

Applications: SDS-PAGE; WB; ELISA; IP.





TEL:4006-871-227 Web:www.ybio.net Email:shybio@126.com

(May be suitable for use in other assays to be determined by the end user.)

[USAGE]

Reconstitute in sterile PBS, pH7.2-pH7.4.

[STORAGE AND STABILITY]

Storage: Avoid repeated freeze/thaw cycles.

Store at 2-8°C for one month.

Aliquot and store at -80°C for 12 months.

Stability Test: The thermal stability is described by the loss rate of the target protein. The loss rate was determined by accelerated thermal degradation test, that is, incubate the protein at 37°C for 48h, and no obvious degradation and precipitation were observed. (Referring from China Biological Products Standard, which was calculated by the Arrhenius equation.) The loss of this protein is less than 5% within the expiration date under appropriate storage condition.

[SEQUENCES]

The sequence of the target protein is listed below.

RATELLY SLNEGLPAGV LIGSLAEDLR LLPRSAGRPD PQSQLPERTG AEWNPPLSFS
LASRGLSGQY VTLDNRSSEL HTSAQEIDRE ALCVEGGGGT AWSGSVSISS SPSDSCLLLL
DVLVLPQEYF RFVKVKIAIR DINDNAPQF