



TEL:4006-871-227 Web:www.ybio.net Email:shybio@126.com

YBC746Hu01 50 μ g

Recombinant Peripheral Myelin Protein 22 (PMP22)

Organism Species: Homo sapiens (Human)

*Instruction
manual*

FOR IN VITRO USE AND RESEARCH USE ONLY
NOT FOR USE IN CLINICAL DIAGNOSTIC PROCEDURES

10th Edition (Revised in Jan,
2014)

[PROPERTIES]

Residues: Met1~Glu160

Tags: Two N-terminal Tags, His-tag and T7-tag

Accession: Q01453

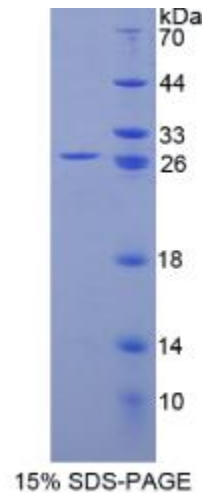
Host: *E. coli*

Subcellular Location: Cell membrane; Multi-pass
membrane protein.

Purity: >95%

Endotoxin Level: <1.0EU per 1 μ g (determined by the
LAL method).

Formulation: Supplied as lyophilized form in PBS, pH7.4
containing 5% sucrose, 0.01% sarcosyl.



The possible reasons that the actual band size differs from the predicted are as follows:

Predicted isoelectric point:

8.4 Predicted Molecular Mass:

21.7kDa



TEL:4006-871-227 Web:www.ybio.net Email:shybio@126.com

Accurate Molecular Mass: 27kDa as determined by SDS-PAGE reducing conditions. Applications: SDS-PAGE; WB; ELISA; IP.

(May be suitable for use in other assays to be determined by the end user.)

Note:

1. Splice variants: Alternative splicing may create different sized proteins from the same gene.
2. Relative charge: The composition of amino acids may affects the charge of the protein.
3. Post-translational modification: Phosphorylation, glycosylation, methylation etc.
4. Post-translation cleavage: Many proteins are synthesized as pro-proteins, and then cleaved to give the active form.
5. Polymerization of the target protein: Dimerization, multimerization etc.

[USAGE]

Reconstitute in sterile PBS, pH7.2-pH7.4.

[STORAGE AND STABILITY]

Storage: Avoid repeated freeze/thaw cycles.

Store at 2-8°C for one month.

Aliquot and store at -80°C for 12 months.

Stability Test: The thermal stability is described by the loss rate of the target protein. The loss rate was determined by accelerated thermal degradation test, that is, incubate the protein at 37°C for 48h, and no obvious degradation and precipitation were observed. (Referring from China Biological Products Standard, which was calculated by the Arrhenius equation.) The loss of this protein is less than 5% within the expiration date under appropriate storage condition.

[SEQUENCES]

The sequence of the target protein is listed below.



TEL:4006-871-227 Web:www.ybio.net Email:shybio@126.com

MLLLLLSIIV LHVAVLVLLF VSTIVSQWIV GNGHATDLWQ NCSTSSSGNV HHCFS SSPNE

WLQSVQATMI LSIIFSILSL FLFFCQLFTL TKGGRFYITG IFQILAGLCV MSAAAIYTVR

HPEWHLNSDY SYGFAYILAW VAFPLALLSG VIYVILRKRE

[REFERENCES]

1. Patel P. I., *et al.* (1992) *Nat. Genet.* 1:159-165.
2. Hayasaka K., *et al.* (1992) *Biochem. Biophys. Res. Commun.* 186:827-831.
3. Roa B. B., *et al.* (1993) *Nat. Genet.* 5:269-273.
4. Roa B. B., *et al.* (1993) *N. Engl. J. Med.* 329:96-101.