



TEL:4006-871-227 Web:www.ybio.net Email:shybio@126.com

YBC262Ra01
100µg

Recombinant Tight Junction Protein 1 (TJP1)

Organism Species: Rattus norvegicus (Rat)

***Instruction
manual***

FOR IN VITRO USE AND RESEARCH USE ONLY
NOT FOR USE IN CLINICAL DIAGNOSTIC PROCEDURES

10th Edition (Revised in Jan,
2014)

[PROPERTIES]

Residues: Gly23~Asp502

Tags: Two N-terminal Tags, His-tag and T7-tag

Accession: F1M4A0

Host: *E. coli*

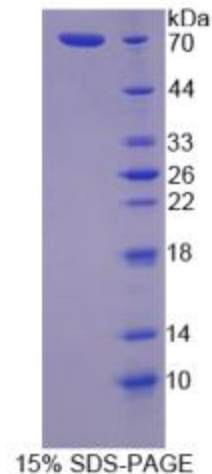
Subcellular Location: Cell membrane. Peripheral membrane protein. Cytoplasmic side. Cell junction, tight junction, gap junction.

Purity: >95%

Endotoxin Level: <1.0EU per 1µg (determined by the LAL method).

Formulation: Supplied as lyophilized form in PBS, pH7.4, containing 5% trehalose, 0.01% sarcosyl.

Predicted isoelectric point: 6.2



The possible reasons that the actual band size differs from the predicted are as follows:

Predicted Molecular Mass: 56.4kDa

Accurate Molecular Mass: 70kDa as determined by SDS-PAGE reducing conditions.

Applications: SDS-PAGE; WB; ELISA; IP.

(May be suitable for use in other assays to be determined by the end user.)

Note:

1. Splice variants: Alternative splicing may create different sized proteins from the same gene.



2. **Relative charge:** The composition of amino acids may affects the charge of the protein.
3. **Post-translational modification:** Phosphorylation, glycosylation, methylation etc.
4. **Post-translation cleavage:** Many proteins are synthesized as pro-proteins, and then cleaved to give the active form.
5. **Polymerization of the target protein:** Dimerization, multimerization etc.

[USAGE]

Reconstitute in sterile PBS, pH7.2-pH7.4.

[STORAGE AND STABILITY]

Storage: Avoid repeated freeze/thaw cycles.

Store at 2-8°C for one month.

Aliquot and store at -80°C for 12 months.

Stability Test: The thermal stability is described by the loss rate of the target protein. The loss rate was determined by accelerated thermal degradation test, that is, incubate the protein at 37°C for 48h, and no obvious degradation and precipitation were observed. (Referring from China Biological Products Standard, which was calculated by the Arrhenius equation.) The loss of this protein is less than 5% within the expiration date under appropriate storage condition.

[SEQUENCES]

The sequence of the target protein is listed below.

GIAISGGR DNPHFQSGET SIVISDVLKG GPAEQLQEN DRVAMVNGVS MDNVEHAFAV
QQLRKSGKNA KITIRRKKKV QIPVSHPPDP PVSDNEDDSY DEDVH DPRSG RGALANRRGE
KSWARDSAS RDRSLSPRSD RRSVASSQPA KPTKVTLVKS RKNEEYGLRL ASHIFVKEIS
QDSLAAARDGN IQEGDVVLKI NGTVTENMSL TDAKTLIERS KGKLMVVQR DERATLLNVP
DLSDSIHSAN ASERDDISEI QSLASDH SVR SHDRPPRRSQ SRSPDQRSEP SDHSTQSPQQ
PSNGSLRSRE EERMSKPGAV STPVKHVDDH TPKAVEE VTV EKHEKQTPTL PEPKPVYAQV
GQPDVDLPVS PSDGVLPNST HEDGILRPSM KLVKFRKGDS VGLRLAGGND VGIFVAGVLE
DSPAAKEGLE EGDQILRVNN VDFTNIREE AVLFLLDLPK GEEVILAQK KKD VYRRIVE SD