



TEL:4006-871-227 Web:www.ybio.net Email:shybio@126.com

YBB013Hu01 50 μ g

Recombinant Cadherin, Placental (CDHP)

Organism Species: Homo sapiens (Human)

*Instruction
manual*

FOR IN VITRO USE AND RESEARCH USE ONLY
NOT FOR USE IN CLINICAL DIAGNOSTIC PROCEDURES

9th Edition (Revised in Jul,
2013)

[PROPERTIES]

Residues: Gly371~Leu660 (Accession # P22223), with
N-terminal His-Tag.

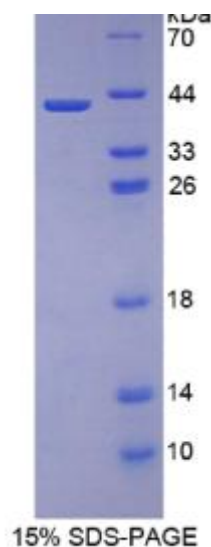
Host: *E. coli*

Subcellular Location: Cell membrane; Single-pass type
I membrane protein.

Purity: >95%

Endotoxin Level: <1.0EU per 1 μ g (determined by the
LAL method).

Formulation: Supplied as lyophilized form in 20mL
Tris, 500mM NaCl, pH8.0, containing 1mM EDTA, 1mM DTI
0.01% sarcosyl, 5% trehalose, and preservative.



The possible reasons that the actual band size differs from the predicted are as follows:

Predicted isoelectric point:

4.8 Predicted Molecular Mass:

33.4kDa



TEL:4006-871-227 Web:www.ybio.net Email:shybio@126.com

Accurate Molecular Mass: 42kDa as determined by SDS-PAGE reducing conditions. Applications: SDS-PAGE; WB; ELISA; IP.

(May be suitable for use in other assays to be determined by the end user.)

Note:

1. Splice variants: Alternative splicing may create different sized proteins from the same gene.
2. Relative charge: The composition of amino acids may affects the charge of the protein.
3. Post-translational modification: Phosphorylation, glycosylation, methylation etc.
4. Post-translation cleavage: Many proteins are synthesized as pro-proteins, and then cleaved to give the active form.
5. Polymerization of the target protein: Dimerization, multimerization etc.

[USAGE]

Reconstitute in sterile PBS, pH7.2-pH7.4.

[STORAGE AND STABILITY]

Storage: Avoid repeated freeze/thaw cycles.

Store at 2-8°C for one month.

Aliquot and store at -80°C for 12 months.

Stability Test: The thermal stability is described by the loss rate of the target protein. The loss rate was determined by accelerated thermal degradation test, that is, incubate the protein at 37°C for 48h, and no obvious degradation and precipitation were observed. (Referring from China Biological Products Standard, which was calculated by the Arrhenius equation.) The loss of this protein is less than 5% within the expiration date under appropriate storage condition.

[SEQUENCES]

The target protein is fused with N-terminal His-Tag, its sequence is listed below.

MGH HHHH HSG SEF-GDDG DHFTIT THPE SNQG IL TTRKG LD FE A KNQHTLYVEV



TEL:4006-871-227 Web:www.ybio.net Email:shybio@126.com

TNEAPFVLKL PTSTATIVVH VEDVNEAPVF VPPSKVVEVQ EGIPTGEPVC VYTAEDPDKE
NQKISYRILR DPAGWLAMD P DSGQVTAVGT LDREDEQFVR NNIYEVMLA MDNGSPPTG
TGTLTLTLID VNDHGPVPEP RQITICNQSP VRQVLNITDK DLSPHTSPFQ AQLTDDSDIY
WTAEVNEEGD TVVLSLKKFL KQDTYDVHLS LSDHGNKEQL TVIRATVCDC HGHVETCPGP
WKGGFILPVL

[REFERENCES]

1. Shimoyama Y., *et al.* (1989) J. Cell Biol. 109:1787-1794.
2. Jarrard D.F., *et al.* (1997) Clin. Cancer Res. 3:2121-2128.
3. Shimoyama Y., *et al.* (1989) Cancer Res. 49:2128-2133.
4. Sprecher E., *et al.* (2001) Nat. Genet. 29:134-136.