



TEL:4006-871-227 Web:www.ybio.net Email:shybio@126.com

YBN342Ra01 100 $\mu$ g

Recombinant Cell Death Inducing DFFA Like Effector C (CIDEc)

Organism Species: *Rattus norvegicus* (Rat)

*Instruction  
manual*

FOR IN VITRO USE AND RESEARCH USE ONLY  
NOT FOR USE IN CLINICAL DIAGNOSTIC PROCEDURES

10th Edition (Revised in Jan, 2014)

## [ PROPERTIES ]

Residues: Met1~Gln221

Tags: Two N-terminal Tags, His-tag and T7-tag

Accession: Q5XI33

Host: *E. coli*

Subcellular Location: Lipid droplet. Endoplasmic  
reticulum. Nucleus.

Purity: >90%

Endotoxin Level: <1.0EU per 1 $\mu$ g (determined by the  
LAL method).

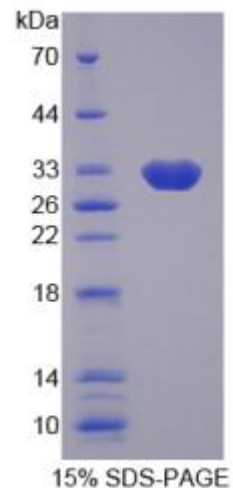
Formulation: Supplied as lyophilized form in PBS,  
pH7.4, containing 5% trehalose, 0.01% sarcosyl.

Predicted isoelectric point: 9.3

Predicted Molecular Mass:

30.9kDa

Applications: SDS-PAGE; WB; ELISA; IP.





(May be suitable for use in other assays to be determined by the end user.)

## [ USAGE ]

Reconstitute in sterile PBS, pH7.2-pH7.4.

## [ STORAGE AND STABILITY ]

Storage: Avoid repeated freeze/thaw cycles.

Store at 2-8°C for one month.

Aliquot and store at -80°C for 12 months.

Stability Test: The thermal stability is described by the loss rate of the target protein. The loss rate was determined by accelerated thermal degradation test, that is, incubate the protein at 37°C for 48h, and no obvious degradation and precipitation were observed. (Referring from China Biological Products Standard, which was calculated by the Arrhenius equation.) The loss of this protein is less than 5% within the expiration date under appropriate storage condition.

## [ SEQUENCES ]

The sequence of the target protein is listed below.

MDYAMKSLSL LYPRSLSRHV AVSTAVVTQQ LVSEPSRETP RARPCRVSTA DRKVRKGIMA  
HSLEDLLGKV QDILKLDKP FSLVLEEDGT IVETEEYFQA LPRDTVFMVL QKGQKWKSPS  
EQRKKKAQLS LSQKPTKKID VARVTFDLYK LNPQDFIGCL NVKATLYDITY SLSYDLHCYR  
AKRIVKEMLR WTLFSMQATG HMLLGTSSYM QQFLDATEEE Q