



TEL:4006-871-227 Web:www.ybio.net Email:shybio@126.com

YB91986Hu02

Hemopexin (HPX)

Organism: Homo sapiens (Human)

Instruction manual

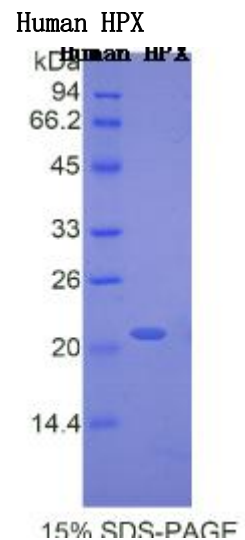
FOR IN VITRO USE AND RESEARCH USE ONLY

NOT FOR USE IN CLINICAL DIAGNOSTIC PROCEDURES

5th Edition (Revised in January,
2013)

[**DESCRIPTION**]

Protein Names: Hemopexin



Synonyms: HPX

Species: Human

Size: 100 μ g

Source: *Escherichia coli*-derived

Subcellular Location: Secreted.

[**PROPERTIES**]

Residues: Thr24~Ala173 (Accession # P02790), with
N-terminal His-Tag.



TEL:4006-871-227 Web:www.ybio.net Email:shybio@126.com

Grade & Purity: >95%, 21kDa as determined

by SDS-PAGE reducing conditions.

Formulation: Supplied as lyophilized form

in PBS, pH 7.4, containing 5% sucrose,

0.01% sarcosyl.

Endotoxin Level: <1.0 EU per 1 μ g

(determined by the LAL method).

Applications: SDS-PAGE; WB; ELISA; IP.

(May be suitable for use in other assays to be determined by the end user.)

Predicted Molecular Mass: 18.6kDa

Predicted isoelectric point: 5.4

[PREPARATION]

Reconstitute in sterile PBS, pH7.2-pH7.4.

[STORAGE AND STABILITY]

Storage: Avoid repeated freeze/thaw cycles.

Store at 2-8°C for one month.

Aliquot and store at -80°C for 12 months.

Stability Test: The thermal stability is described by the loss rate of the target protein. The loss rate was determined by accelerated thermal degradation test, that is, incubate the protein at 37°C for 48h, and no obvious degradation and precipitation were observed. (Referring from China Biological Products Standard, which was calculated by the Arrhenius equation.) The loss of this protein is less than 5% within the expiration date under appropriate storage condition.

[SEQUENCES]

The target protein is fused with N-terminal His-Tag, its sequence is listed below.

MGHHHHHSGSEF- TPLPPTS AHGNVAEGET KPDPDVTERC SDGWSFDATT



TEL:4006-871-227 Web:www.ybio.net Email:shybio@126.com

LDDNGTMLFF KGEFVWKSHK WDRELISERW KNFSPVDAA FRQGHNSVFL
IKGDKVWVYP PEKKEKGYPK LLQDEFPGIP SPLDAAVECH RGECQAEGVL
FFQGDREWFV DLA