



TEL:4006-871-227 Web:www.ybio.net Email:shybio@126.com

YB90966Hu01 100 μ g

Sialic Acid Binding Ig Like Lectin 1 (SIGLEC1)

Organism: Homo sapiens (Human)

Instruction manual

FOR IN VITRO USE AND RESEARCH USE ONLY

NOT FOR USE IN CLINICAL DIAGNOSTIC PROCEDURES

6th Edition (Revised in March, 2013)

[PROPERTIES]

Residues: Gly34~Gly240 (Accession # Q9BZZ2),
with N-terminal His-Tag.

Host: *E. coli*

Subcellular Location: Cell membrane;
Single-pass type I membrane protein.

Purity: >95%

Endotoxin Level: <1.0EU per 1 μ g
(determined by the LAL method).

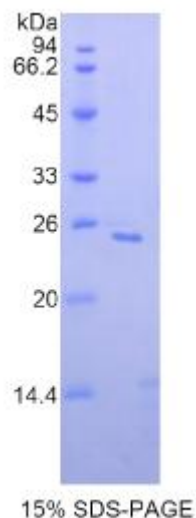
Formulation: Supplied as lyophilized form in PBS,
pH7.4, containing 5% sucrose, 0.01% sarcosyl.

Predicted isoelectric point: 5.9

Predicted Molecular Mass: 25.0kDa

Applications: SDS-PAGE; WB; ELISA; IP.

(May be suitable for use in other assays to be determined by the end user.)



[USAGE]



TEL:4006-871-

227 Web:www.ybio.net Email:shybio@126.com

Reconstitute in sterile PBS, pH7.2-pH7.4.



TEL:4006-871-227 Web:www.ybio.net Email:shybio@126.com

[STORAGE AND STABILITY]

Storage: Avoid repeated freeze/thaw cycles.

Store at 2-8°C for one month.

Aliquot and store at -80°C for 12 months.

Stability Test: The thermal stability is described by the loss rate of the target protein. The loss rate was determined by accelerated thermal degradation test, that is, incubate the protein at 37°C for 48h, and no obvious degradation and precipitation were observed. (Referring from China Biological Products Standard, which was calculated by the Arrhenius equation.) The loss of this protein is less than 5% within the expiration date under appropriate storage condition.

[SEQUENCES]

The target protein is fused with N-terminal His-Tag, its sequence is listed below.

```
MGHHHHHSGSEF- GSCLLIP CIFSFPADVE VPDGITAIWY YDYSGQRQVV SHSADPKLVE  
ARFRGRTEFM GNPEHRVCNL LLKDLQPEDS GSYNFRFEIS EVNRWSDVKG TLVTVTEEPR  
VPTIASPVEL LEGTEVDFNC STPYVCLQEQ VRLQWQQQDP ARSVTFNSQK FEPTGVGHLE  
TLHMAMSWQD HGRILRCQLS VANHRAQSEI HLQVKYAPKG
```