



TEL:4006-871-227 Web:www.ybio.net Email:shybio@126.com

YBK459Hu01 100ug

Recombinant Eomesodermin (EOMES)

Organism Species: Homo sapiens (Human)

Instruction manual

FOR IN VITRO USE AND RESEARCH USE ONLY

NOT FOR USE IN CLINICAL DIAGNOSTIC PROCEDURES

10th Edition (Revised in Jan, 2014)

[PROPERTIES]

Residues: Leu400~Ser669

Tags: Two N-terminal Tags, His-tag and GST-tag

Accession: 095936

Host: *E. coli*

Subcellular Location: Nucleus.

Purity: >90%

Endotoxin Level: <1.0EU per 1 μ g (determined by the LAL method).

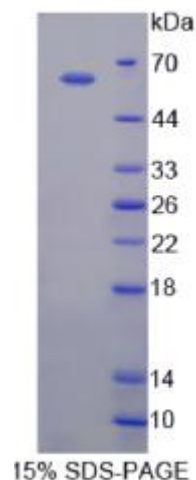
Formulation: Supplied as lyophilized form in 20mM Tris
150mM NaCl, pH8.0, containing 1mM EDTA, 1mM DTT,
0.01% sarcosyl, 5% trehalose, and preservative.

Predicted isoelectric point: 5.0

Predicted Molecular Mass:

60.1kDa

Applications: SDS-PAGE; WB; ELISA; IP.





TEL:4006-871-227 Web:www.ybio.net Email:shybio@126.com

(May be suitable for use in other assays to be determined by the end user.)

[USAGE]

Reconstitute in sterile ddH₂O.

[STORAGE AND STABILITY]

Storage: Avoid repeated freeze/thaw cycles.

Store at 2-8°C for one month.

Aliquot and store at -80°C for 12 months.

Stability Test: The thermal stability is described by the loss rate of the target protein. The loss rate was determined by accelerated thermal degradation test, that is, incubate the protein at 37°C for 48h, and no obvious degradation and precipitation were observed. (Referring from China Biological Products Standard, which was calculated by the Arrhenius equation.) The loss of this protein is less than 5% within the expiration date under appropriate storage condition.

[SEQUENCES]

The sequence of the target protein is listed below.

LHIVEVTEDEG VEDLNEPSKT QTFTFSETQF IAVTAYQNTD ITQLKIDHNP FAKGFRDNYD
SSHQIVPGGR YGVQSFPEP FVNTLPQARY YNGERTVPQT NGLLSPQQSE EVANPPQRWL
VTPVQQPGTN KLDISSYESE YTSSTLLPYG IKSLPLQTSR ALGYYPDPTF PAMAGWGGRG
SYQRKMAAGL PWTSRSTPTV FSEDQLSKEK VKEEIGSSWI ETPPSIKSLD SNDSGVYTSA
CKRRRLSPSN SSNENSPSIK CEDINAE EYS