



TEL:4006-871-227 Web:www.ybio.net Email:shybio@126.com

**YB83226Mu01 100μg**

**A Disintegrin And Metalloproteinase With Thrombospondin 12 (ADAMTS12)**

**Organism: Mus musculus (Mouse)**

*Instruction manual*

FOR IN VITRO USE AND RESEARCH USE ONLY

NOT FOR USE IN CLINICAL DIAGNOSTIC PROCEDURES

6th Edition (Revised in March, 2013)

## [ PROPERTIES ]

**Residues:** Lys827~Pro1001 (Accession # Q8WZ42),  
with N-terminal His-Tag.

**Host:** *E. coli*

**Subcellular Location:** Secreted, extracellular space,  
extracellular matrix.

**Purity:** >95%

**Endotoxin Level:** <1.0EU per 1 μg (determined by the  
LAL method).

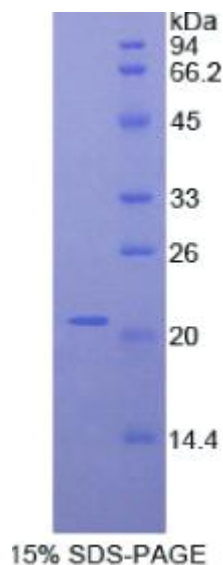
**Formulation:** Supplied as lyophilized form in PBS, pH7.4,  
containing 5% sucrose, 0.01% sarcosyl.

**Predicted isoelectric point:** 8.8

**Predicted Molecular Mass:** 21.0kDa

**Applications:** SDS-PAGE; WB; ELISA; IP.

(May be suitable for use in other assays to be determined by the end user.)





TEL:4006-871-227 Web:www.ybio.net Email:shybio@126.com

## [ USAGE ]

Reconstitute in sterile PBS, pH7.2-pH7.4.

## [ STORAGE AND STABILITY ]

**Storage:** Avoid repeated freeze/thaw cycles.

Store at 2-8°C for one month.

Aliquot and store at -80°C for 12 months.

**Stability Test:** The thermal stability is described by the loss rate of the target protein. The loss rate was determined by accelerated thermal degradation test, that is, incubate the protein at 37°C for 48h, and no obvious degradation and precipitation were observed. (Referring from China Biological Products Standard, which was calculated by the Arrhenius equation.) The loss of this protein is less than 5% within the expiration date under appropriate storage condition.

## [ SEQUENCES ]

The target protein is fused with N-terminal His-Tag, its sequence is listed below.

MGHHHHHSGSEF-KLLY FWQFGRWTEC SVTCGTGIRR QAAHCVKKGH GIVKTTFCNP

ET Q P S V R Q K K C H E K D C P P R W A G E W E A C S T T C G P Y G E K K R T V L C I Q T M G S

D E Q A L P A T D C Q H L L K P K A L V S C N R D I L C P S D W T V G N W S E C S V S C G G G V R I

RSVTCAKNLN EPCDKTRKPN SRALCGLQQC P