



TEL:4006-871-227 Web:www.ybio.net Email:shybio@126.com

YBL930Hu01 100 μ g

Recombinant Semaphorin 3F (SEMA3F)

Organism Species: Homo sapiens (Human)

*Instruction
manual*

FOR IN VITRO USE AND RESEARCH USE ONLY

NOT FOR USE IN CLINICAL DIAGNOSTIC PROCEDURES

11th Edition (Revised in May,
2016)

[PROPERTIES]

Source: Prokaryotic expression.

Host: *E. coli*

Residues: Val350~Leu483

Tags: N-terminal His-Tag

Homology: Mouse 96%, rat

96%

Tissue Specificity: Breast, kidney, brain, lung, liver.

Subcellular Location: Secreted.

Purity: >95%

Endotoxin Level: <1.0EU per 1 μ g (determined by the LAL method). **Traits:** Freeze-dried powder

Buffer formulation: 20mM Tris, 150mM NaCl, pH8.0, containing 1mM EDTA, 1mM DTT, 0.01% sarcosyl, 5%Trehalose and Proclin300.

Original Concentration: 200ug/mL

Applications: SDS-PAGE; WB; ELISA; IP; CoIP; Reporter Assays;
Purification; Amine Reactive Labeling.



TEL:4006-871-227 Web:www.ybio.net Email:shybio@126.com

(May be suitable for use in other assays to be determined by the end user.)

Predicted isoelectric point:

9.2 Predicted Molecular Mass:

16.6kDa

Accurate Molecular Mass: 16kDa as determined by SDS-PAGE reducing conditions.

[USAGE]

Reconstitute in 20mM Tris, 150mM NaCl (pH8.0) to a concentration of 0.1-1.0 mg/mL. Do not vortex.

[STORAGE AND STABILITY]

Storage: Avoid repeated freeze/thaw cycles.

Store at 2-8°C for one month.

Aliquot and store at -80°C for 12 months.

Stability Test: The thermal stability is described by the loss rate. The loss rate was determined by accelerated thermal degradation test, that is, incubate the protein at 37°C for 48h, and no obvious degradation and precipitation were observed. The loss rate is less than 5% within the expiration date under appropriate storage condition.

[SEQUENCE]

RNPVIYAVFT SSGSVFRGSA VCVYSMADIR MVFNPGFAHK EGPNYQWMPF V
SGKMPYPRPG TCPGGTFTPS MKSTKDYPDE VINFMRSHP L MYQAVYPLQR
RPLVVRTGAP YRLTTIAVDQ VDAADGRYEV LFL

[IDENTIFICATION]

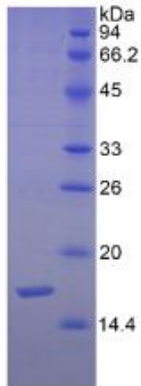


Figure 1. SDS-PAGE