



TEL:4006-871-227 Web:www.ybio.net Email:shybio@126.com

YBC596Ra01 100 μ g

Recombinant Vasoactive Intestinal Peptide Receptor 1 (VIPR1)

Organism Species: *Rattus norvegicus* (Rat)

*Instruction
manual*

FOR IN VITRO USE AND RESEARCH USE ONLY

NOT FOR USE IN CLINICAL DIAGNOSTIC PROCEDURES

10th Edition (Revised in Jan, 2014)

[PROPERTIES]

Residues: Gln34~Gly146

Tags: Two N-terminal Tags, His-tag and T7-tag

Accession: P30083

Host: *E. coli*

Subcellular Location: Cell membrane. Purity:

>95%

Endotoxin Level: <1.0EU per 1 μ g (determined by the LAL method).

Formulation: Supplied as lyophilized form in PBS, pH7.4, containing 5% trehalose, 0.01% sarcosyl.

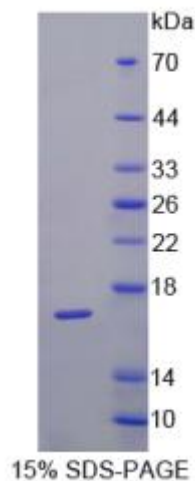
Predicted isoelectric point: 4.7

Predicted Molecular Mass:

16.6kDa

Applications: SDS-PAGE; WB; ELISA; IP.

(May be suitable for use in other assays to be determined by the end user.)





TEL:4006-871-227 Web:www.ybio.net Email:shybio@126.com

[USAGE]

Reconstitute in sterile PBS, pH7.2-pH7.4.

[STORAGE AND STABILITY]

Storage: Avoid repeated freeze/thaw cycles.

Store at 2-8°C for one month.

Aliquot and store at -80°C for 12 months.

Stability Test: The thermal stability is described by the loss rate of the target protein. The loss rate was determined by accelerated thermal degradation test, that is, incubate the protein at 37°C for 48h, and no obvious degradation and precipitation were observed. (Referring from China Biological Products Standard, which was calculated by the Arrhenius equation.) The loss of this protein is less than 5% within the expiration date under appropriate storage condition.

[SEQUENCES]

The sequence of the target protein is listed below.

QHECEYL QLIEIQRQC LEEAQLNET TGCSKMDNL TCWPTPRGQ AVVLDCLIF
QLFAPIHGYN ISRSCTEEGW SQLEPGPYHI ACGLNDRASS LDEQQTKFY NTVKTG