



TEL:4006-871-227 Web:www.ybio.net Email:shybio@126.com

YBH983Hu01 100 $\mu$ g

Recombinant Glycerol-3-Phosphate Acyltransferase, Mitochondrial (GPAM)

Organism Species: Homo sapiens (Human)

*Instruction  
manual*

FOR IN VITRO USE AND RESEARCH USE ONLY

NOT FOR USE IN CLINICAL DIAGNOSTIC PROCEDURES

10th Edition (Revised in Jan, 2014)

## [ PROPERTIES ]

Residues: Leu594~Leu828

Tags: Two N-terminal Tags, His-tag and T7-tag

Accession: Q9HCL2

Host: *E. coli*

Subcellular Location: Mitochondrion outer membrane. Multi-pass membrane protein.

Purity: >95%

Endotoxin Level: <1.0EU per 1 $\mu$ g (determined by the LAL method).

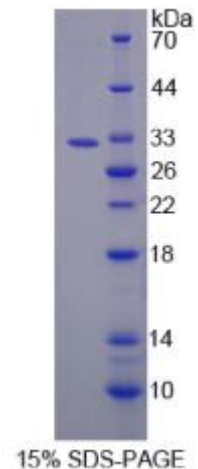
Formulation: Supplied as lyophilized form in PBS, pH7.4, containing 5% trehalose, 0.01% sarcosyl.

Predicted isoelectric point: 5.5

Predicted Molecular Mass:

30.5kDa

Applications: SDS-PAGE; WB; ELISA; IP.





(May be suitable for use in other assays to be determined by the end user.)

## [ USAGE ]

Reconstitute in sterile PBS, pH7.2-pH7.4.

## [ STORAGE AND STABILITY ]

Storage: Avoid repeated freeze/thaw cycles.

Store at 2-8°C for one month.

Aliquot and store at -80°C for 12 months.

Stability Test: The thermal stability is described by the loss rate of the target protein. The loss rate was determined by accelerated thermal degradation test, that is, incubate the protein at 37°C for 48h, and no obvious degradation and precipitation were observed. (Referring from China Biological Products Standard, which was calculated by the Arrhenius equation.) The loss of this protein is less than 5% within the expiration date under appropriate storage condition.

## [ SEQUENCES ]

The sequence of the target protein is listed below.

LNKRGLG GPTSTPPNLI SQEQLVRKAA SLCYLLSNEG TISLPCQTFY QVCHETVGKF  
IQYGILTVAE HDDQEDISPS LAEQQWDKKL PEPLSWRSDE EDESDFGEE QRDCYLKVSQ  
SKEHQQFITF LQRLGPLE AYSSAAIFVH NFSGPVPEPE YLQKLHKYLI TRTERNAVY  
AESATYCLVK NAVKMFKDIG VFKETKQKRV SVLELSSTFL PQCNRQKLE YILSFVVL