



TEL:4006-871-227 Web:www.ybio.net Email:shybio@126.com

YBC318Hu01 100 $\mu$ g

Recombinant Aristaless Related Homeobox Protein (ARX)

Organism Species: Homo sapiens (Human)

*Instruction manual*

FOR IN VITRO USE AND RESEARCH USE ONLY

NOT FOR USE IN CLINICAL DIAGNOSTIC PROCEDURES

10th Edition (Revised in Jan, 2014)

## [ PROPERTIES ]

Residues: Ser25~Asp246

Tags: Two N-terminal Tags, His-tag and T7-tag

Accession: Q96QS3

Host: *E. coli*

Subcellular Location: Nucleus.

Purity: >95%

Endotoxin Level: <1.0EU per 1 $\mu$ g (determined by the LAL method).

Formulation: Supplied as lyophilized form in PBS, pH7.4 containing 5% trehalose, 0.01% sarcosyl.

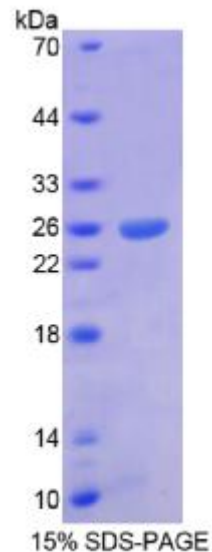
Predicted isoelectric point: 4.6

Predicted Molecular Mass: 25.8kDa

Applications: SDS-PAGE; WB; ELISA; IP.

(May be suitable for use in other assays to be determined by the end user.)

## [ USAGE ]





TEL:4006-871-227 Web:www.ybio.net Email:shybio@126.com

Reconstitute in sterile PBS, pH7.2-pH7.4.

## [ STORAGE AND STABILITY ]

Storage: Avoid repeated freeze/thaw cycles.

Store at 2-8°C for one month.

Aliquot and store at -80°C for 12 months.

Stability Test: The thermal stability is described by the loss rate of the target protein. The loss rate was determined by accelerated thermal degradation test, that is, incubate the protein at 37°C for 48h, and no obvious degradation and precipitation were observed. (Referring from China Biological Products Standard, which was calculated by the Arrhenius equation.) The loss of this protein is less than 5% within the expiration date under appropriate storage condition.

## [ SEQUENCES ]

The sequence of the target protein is listed below.

SSYCID SILGRRSPCK MRLGAAQSL PPLTSRADP EKAVQSPKS SSAPFEAELH  
LPPKLRRLYG PGGRLLQGA AAAAAAAAAA AAAAAATATAG PRGEAPPPPP PTARPGERPD  
GAGAAAAAAAA AAAAAWDTLK ISQAPQVSIS RSKSYRENGA PFVPPPPALD ELGGPGGVTH  
PEERLGVAGG PGSAPAAGGG TGTEDEEEL LEDEDEDEE EELLED