



TEL:4006-871-227 Web:www.ybio.net Email:shybio@126.com

YBA849Ra01 50 μ g

Recombinant Glycogen Phosphorylase, Liver (PYGL)

Organism Species: *Rattus norvegicus* (Rat)

Instruction manual

FOR IN VITRO USE AND RESEARCH USE ONLY

NOT FOR USE IN CLINICAL DIAGNOSTIC PROCEDURES

10th Edition (Revised in Jan, 2014)

[PROPERTIES]

Residues: Thr341~Gly509

Tags: N-terminal His-Tag

Accession: P09811

Host: *E. coli*

Purity: >95%

Endotoxin Level: <1.0EU per 1 μ g (determined by the LAL method).

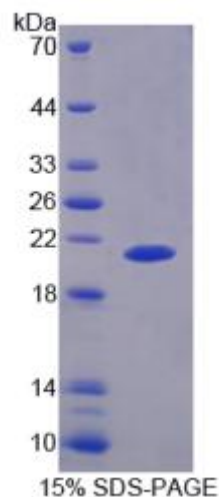
Formulation: Supplied as lyophilized form in PBS, pH7.4, containing 1mM DTT, 5% trehalose, 0.01% sarcosyl and preservative.

Predicted isoelectric point: 7.8

Predicted Molecular Mass: 21.0kDa

Applications: SDS-PAGE; WB; ELISA; IP.

(May be suitable for use in other assays to be determined by the end user.)



[USAGE]



Reconstitute in sterile PBS, pH7.2-pH7.4.

[STORAGE AND STABILITY]

Storage: Avoid repeated freeze/thaw cycles.

Store at 2-8°C for one month.

Aliquot and store at -80°C for 12 months.

Stability Test: The thermal stability is described by the loss rate of the target protein. The loss rate was determined by accelerated thermal degradation test, that is, incubate the protein at 37°C for 48h, and no obvious degradation and precipitation were observed. (Referring from China Biological Products Standard, which was calculated by the Arrhenius equation.) The loss of this protein is less than 5% within the expiration date under appropriate storage condition.

[SEQUENCES]

The sequence of the target protein is listed below.

THPALAIPEL MRIFVDIEKL PWSKAWAITK KTFAYTNHTV LPEALERWPV DLVEKLLPRH
LQIYEINQK HLDRIVALFP KDIDRMRMS LIEEEGGKRI NMAHLCIVGC HAVNGVAKIH
SDIVKTQVFK DFSELEPKF QNKTNGITPR RWLLCNPGL ADLIAEKIG

[REFERENCES]

1. Armstrong C. G., *et al.* (1998) *Biochem. J.* 336:699-704.
2. Doherty M. J., *et al.* (1995) *FEBS Lett.* 375:294-298.
3. Moorhead G., *et al.* (1995) *FEBS Lett.* 362:101-105.
4. Froman B. E., *et al.* (1991) *Gene* 109:269-274.