



TEL:4006-871-227 Web:www.ybio.net Email:shybio@126.com

YBA780Ca01 100µg

Recombinant Lactoferrin (LTF)

Organism Species: Canis familiaris; Canine (Dog)

Instruction manual

FOR IN VITRO USE AND RESEARCH USE ONLY

NOT FOR USE IN CLINICAL DIAGNOSTIC PROCEDURES

11th Edition (Revised in May, 2016)

[PROPERTIES]

Source: Prokaryotic expression.

Host: *E. coli*

Residues: Cys28~Lys351

Tags: N-terminal His-Tag

Tissue Specificity: Lung, Breast, Colon.

Purity: >95%

Traits: Freeze-dried powder

Buffer formulation: PBS, pH7.4, containing 1mM DTT, 5% trehalose, 0.01% sarcosyl and Proclin300.

Original Concentration: 200ug/mL

Applications: SDS-PAGE; WB; ELISA; IP; CoIP; Purification; Amine Reactive Labeling.

(May be suitable for use in other assays to be determined by the end user.)

Predicted isoelectric point: 8.3

Predicted Molecular Mass: 42.1kDa

Accurate Molecular Mass: 42kDa as determined by SDS-PAGE reducing conditions.

[USAGE]

Reconstitute in PBS (pH7.4) to a concentration of 0.1-1.0 mg/mL. Do not vortex.

[STORAGE AND STABILITY]

Storage: Avoid repeated freeze/thaw cycles.

Store at 2-8°C for one month.

Aliquot and store at -80°C for 12 months.

Stability Test: The thermal stability is described by the loss rate. The loss rate was determined by accelerated thermal degradation test, that is, incubate the protein at 37°C for 48h, and no obvious degradation and precipitation were observed. The loss rate is less than 5% within the expiration date under appropriate storage condition.

[SEQUENCE]

CTT SKAEAKKCSK FQVNMKKVGG
 PIVSCTRKAS RQECIQAIKA NKADAVTLDG GLVFEAGLEP NKLRPIAAEV
 YGTQTKQQIH YYAVAIAKKG TNFQLNQLQG VRSCHTGLGR SAGWNIPIGT
 LRPFLNWTGP PEPLLEAVAK FFSASCVPCA DGKQYPNLCR LCAGTEQNK
 ACSSQEPYFG YSGAFKCLQD GAGDVAFVRD STVFENLPDK ADQDKYELLC
 LNNTRKPVDA FKDCHLARVP SHAVVARSVG GKEDLIWRL QKAQENFGKD
 KSSAFQLFGS PSGEKDLLFK DSAIGFLRIP SNIDSELYLG FNYINAIQSL
 K

[IDENTIFICATION]

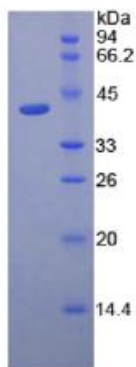


Figure 1. SDS-PAGE



TEL:4006-871-
227 Web:www.ybi
o.net Email:shy
bio@126.com