



TEL:4006-871-227 Web:www.ybio.net Email:shybio@126.com

YBB843Ra01 100ug Recombinant Signaling Lymphocytic  
Activation Molecule Family, Member 2 (SLAMF2)

Organism Species: *Rattus norvegicus* (Rat)

*Instruction manual*

FOR IN VITRO USE AND RESEARCH USE ONLY  
NOT FOR USE IN CLINICAL DIAGNOSTIC PROCEDURES

10th Edition (Revised in Jan, 2014)

[ PROPERTIES ]

Residues: Phe23~Ala240

Tags: Two N-terminal Tags, His-tag and T7-tag

Accession: P10252

Host: *E. coli*

Subcellular Location: Cell membrane. Lipid-anchor  
GPI-anchor.

Purity: >90%

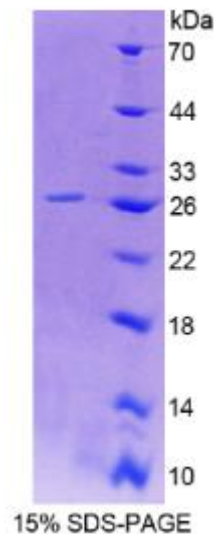
Endotoxin Level: <1.0EU per 1 $\mu$ g (determined by the  
LAL method).

Formulation: Supplied as lyophilized form in 20mL  
Tris, 150mM NaCl, pH8.0, containing 1mM EDTA, 1mM  
DTT, 0.01% sarcosyl, 5% trehalose, and preservative.

Predicted isoelectric point: 6.3

Predicted Molecular Mass:

28.7kDa





TEL:4006-871-227 Web:www.ybio.net Email:shybio@126.com

Applications: SDS-PAGE; WB; ELISA; IP.

(May be suitable for use in other assays to be determined by the end user.)

### [ USAGE ]

Reconstitute in sterile ddH<sub>2</sub>O.

### [ STORAGE AND STABILITY ]

Storage: Avoid repeated freeze/thaw cycles.

Store at 2-8°C for one month.

Aliquot and store at -80°C for 12 months.

Stability Test: The thermal stability is described by the loss rate of the target protein. The loss rate was determined by accelerated thermal degradation test, that is, incubate the protein at 37°C for 48h, and no obvious degradation and precipitation were observed. (Referring from China Biological Products Standard, which was calculated by the Arrhenius equation.) The loss of this protein is less than 5% within the expiration date under appropriate storage condition.

### [ SEQUENCES ]

The sequence of the target protein is listed below.

FQDQSVPN VNAITGSNVT LTILKHPLAS YQRLTWLHHT NQKILEYFPN GKKTVFESVF  
KDRVLDKTN GALRIYNVSK EDRGDYMRM LHETEDQWKI TMEVYDLVSK PAIKIEKTKN  
LTDSCHLRLS CKVEDQGVDY TWYEDSGPFP QRNPGYVLEI TITPHNKSTF YTCQVSNPVS  
SENDLYFIP PCTLARSSGV HWIAAWLVVT LSIIPSILLA