



YBC202Hu01 50 μ g
Recombinant Desmoglein 2 (DSG2)
Organism Species: Homo sapiens (Human)

***Instruction
manual***

FOR IN VITRO USE AND RESEARCH USE ONLY
NOT FOR USE IN CLINICAL DIAGNOSTIC PROCEDURES

10th Edition (Revised in Jan,
2014)

[PROPERTIES]

Residues: Lys275~Val533

Tags: Two N-terminal Tags, His-tag and T7-tag

Accession: Q14126

Host: *E. coli*

Purity: >95%

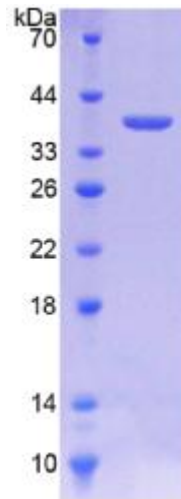
Endotoxin Level: <1.0EU per 1 μ g (determined by the LAL method).

Formulation: Supplied as lyophilized form in 100mM NaHCO₃, 500mM NaCl, pH8.3, containing 1mM EDTA, 1mM DTT, 0.01% sarcosyl, 5% trehalose, and preservative.

Predicted isoelectric point: 4.8

Predicted Molecular Mass: 32.7kDa

Accurate Molecular Mass: 38kDa as determined by SDS-PAGE reducing



The possible reasons that the actual band size differs from the predicted are as follows:
conditions.

Applications: SDS-PAGE; WB; ELISA; IP.

(May be suitable for use in other assays to be determined by the end user.)

Note:

- 1. Splice variants: Alternative splicing may create different sized proteins from the same gene.**
- 2. Relative charge: The composition of amino acids may affects the charge of the protein.**
- 3. Post-translational modification: Phosphorylation, glycosylation, methylation etc.**



4. Post-translation cleavage: Many proteins are synthesized as pro-proteins, and then cleaved to give the active form.
5. Polymerization of the target protein: Dimerization, multimerization etc.

[USAGE]

Reconstitute in sterile ddH₂O.

[STORAGE AND STABILITY]

Storage: Avoid repeated freeze/thaw cycles.

Store at 2-8°C for one month.

Aliquot and store at -80°C for 12 months.

Stability Test: The thermal stability is described by the loss rate of the target protein. The loss rate was determined by accelerated thermal degradation test, that is, incubate the protein at 37°C for 48h, and no obvious degradation and precipitation were observed. (Referring from China Biological Products Standard, which was calculated by the Arrhenius equation.) The loss of this protein is less than 5% within the expiration date under appropriate storage condition.

[SEQUENCES]

The sequence of the target protein is listed below.

KVLEGM VEENQVNVEV TRIKVFDADE IGSDNWLANF TFASGNEGGY FHIETDAQTN
EGIVTLIKEV DYEEMKNLDF SVIVANKAAF HKSIRSKYKP TPIPIKVVKV NVKEGIHFKS
SVISIVVSES MDRSSKGQII GNFQAFDEDT GLPAHARYVK LEDRDNWISV DSVTSEIKLA
KLPDFESRYV QNGTYTVKIV AISEDYPRKT ITGTVLINVE DINDNCPTLI EPVQTICHDA
EYVNVTAEDL DGHPNSGPFS FSV

[REFERENCES]

1. Schaefer S., *et al.* (1994) *Exp. Cell Res.* 211:391-399.
2. Koch P.J., *et al.* (1991) *Eur. J. Cell Biol.* 55:200-208.
3. Chen R., *et al.* (2009) *J. Proteome Res.* 8:651-661.
4. Mayya V., *et al.* (2009) *Sci. Signal.* 2:RA46-RA46.