



TEL:4006-871-227 Web:www.ybio.net Email:shybio@126.com

**YBA109Hu01 100 $\mu$ g**  
**Creatine Kinase, Muscle (CKM)**  
**Organism Species: Homo sapiens (Human)**  
***Instruction manual***

**FOR IN VITRO USE AND RESEARCH USE ONLY**  
**NOT FOR USE IN CLINICAL DIAGNOSTIC PROCEDURES**

9th Edition (Revised in Jul, 2013)

**[ PROPERTIES ]**

**Residues: Lys11~Leu367 (Accession # P06732), with N-terminal His-Tag.**

**Host: *E. coli***

**Subcellular Location: Cytoplasm.**

**Purity: >95%**

**Endotoxin Level: <1.0EU per 1 $\mu$ g**  
**(determined by the LAL method).**

**Formulation: Supplied as lyophilized form in PBS, pH7.4,**  
**containing 5% sucrose, 0.01% sarcosyl.**

**Predicted isoelectric point: 6.7**

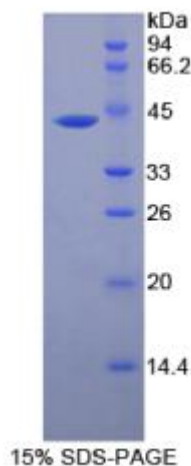
**Predicted Molecular Mass: 41.9kDa**

**Applications: SDS-PAGE; WB; ELISA; IP.**

**(May be suitable for use in other assays to be determined by the end user.)**

**[ USAGE ]**

**Reconstitute in sterile PBS, pH7.2-pH7.4.**





## **[ STORAGE AND STABILITY ]**

**Storage: Avoid repeated freeze/thaw cycles.**

**Store at 2-8°C for one month.**

**Aliquot and store at -80°C for 12 months.**

**Stability Test:** The thermal stability is described by the loss rate of the target protein. The loss rate was determined by accelerated thermal degradation test, that is, incubate the protein at 37°C for 48h, and no obvious degradation and precipitation were observed. (Referring from China Biological Products Standard, which was calculated by the Arrhenius equation.) The loss of this protein is less than 5% within the expiration date under appropriate storage condition.

## **[ SEQUENCES ]**

**The target protein is fused with N-terminal His-Tag, its sequence is listed below.**

**MGHHHHHSGSEF- KLNYPKEEY PDLSKHNNHM AKVLTLELYK KLRDKETPSG  
FTVDDVIQTG VDNPGHPFIM TVGCVAGDEE SYEVFKELFD PIIDRHGGY KPTDKHKTDL  
NHENLKGDD LDPNYVLSSR VRTGRSIKGY TLPPHCSRGE RRAVEKLSVE ALNSLTGEFK  
GKYYPLKSMT EKEQQQLIDD HFLFDKPVSP LLLASGMARD WPDARGIWHN DNKSFLVWVN  
EEDHLRVISM EKGGMKEVF RRFCVGLQKI EEIFKKAGHP FMWNQHLGYV LTCPSNLGTG  
LRGGVHVKLA HLSKHPKFEE ILTRLRLQKR GTGGVDAAV GSVFDVSNAD RLGSEVEQV  
QLVVDGVKLM VEMEKKL**