



TEL:4006-871-227 Web:www.ybio.net Email:shybio@126.com

YBH673Hu01 100µg
Recombinant Malate Dehydrogenase 1 (MDH1)
Organism Species: Homo sapiens (Human)

Instruction manual

FOR IN VITRO USE AND RESEARCH USE ONLY
NOT FOR USE IN CLINICAL DIAGNOSTIC PROCEDURES

10th Edition (Revised in Jan, 2014)

[PROPERTIES]

Residues: Ser2~Ala334

Tags: Two N-terminal Tags, His-tag and GST-tag

Accession: P40925

Host: *E. coli*

Subcellular Location: Cytoplasm.

Purity: >90%

Endotoxin Level: <1.0EU per 1µg (determined by the LAL method).

Formulation: Supplied as lyophilized form in PBS, pH7.4, containing 5% trehalose, 0.01% sarcosyl.

Predicted isoelectric point: 6.9

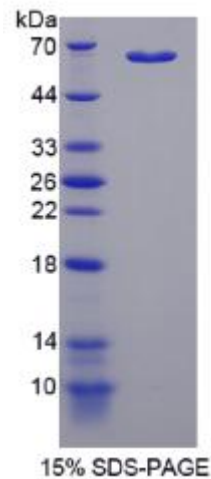
Predicted Molecular Mass: 66.3kDa

Applications: SDS-PAGE; WB; ELISA; IP.

(May be suitable for use in other assays to be determined by the end user.)

[USAGE]

Reconstitute in sterile PBS, pH7.2-pH7.4.





[STORAGE AND STABILITY]

Storage: Avoid repeated freeze/thaw cycles.

Store at 2-8°C for one month.

Aliquot and store at -80°C for 12 months.

Stability Test: The thermal stability is described by the loss rate of the target protein. The loss rate was determined by accelerated thermal degradation test, that is, incubate the protein at 37°C for 48h, and no obvious degradation and precipitation were observed. (Referring from China Biological Products Standard, which was calculated by the Arrhenius equation.) The loss of this protein is less than 5% within the expiration date under appropriate storage condition.

[SEQUENCES]

The sequence of the target protein is listed below.

**SEPIRVLVT GAAGQIAYSL LYSIGNGSVF GKDQPIILVL LDITPMMGVL DGVMELQDC
ALPLLKD VIA TDKEDVAFKD LDVAILVGSM PRREGMERKD LLKANVKIFK SQGAALDKYA
KKS VKVIVVG NPANTNCLTA SKSAPSIPKE NF SCLTRL DH NRAKAQIALK LGVTANDVKN
VIIWGNHSST QYPDVNHAKV KLQGKEVG VY EALKDDSWLK GEFVTTVQQR GAAVIKARKL
SSAMSAAKAI CDHVRDIWFG TPEGEFVSMG VISDGNSYGV PDDL LYSFPV VIKNKTWKFV
EGLPINDFSR EKMDLTAKEL TEEKESAFEF LSSA**