



TEL:4006-871-227 Web:www.ybio.net Email:shybio@126.com

YBD295Ra01 100 $\mu$ g

Recombinant Cytochrome P450 1A1 (CYP1A1)

Organism Species: *Rattus norvegicus* (Rat)

*Instruction manual*

FOR IN VITRO USE AND RESEARCH USE ONLY

NOT FOR USE IN CLINICAL DIAGNOSTIC PROCEDURES

10th Edition (Revised in Jan, 2014)

## [ PROPERTIES ]

Residues: Ser251~His521

Tags: Two N-terminal Tags, His-tag and GST-tag

Accession: P00185

Host: *E. coli*

Subcellular Location: Endoplasmic reticulum membrane. Mitochondrion membrane. Microsome membrane.

Purity: >90%

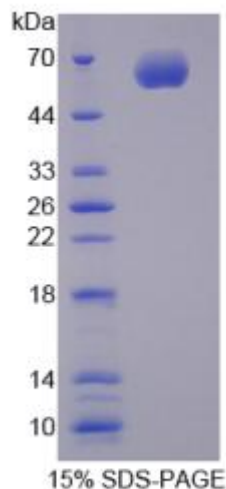
Endotoxin Level: <1.0EU per 1 $\mu$ g (determined by the LAL method).

Formulation: Supplied as lyophilized form in PBS, pH7.4, containing 5% trehalose, 0.01% sarcosyl.

Predicted isoelectric point: 6.8

Predicted Molecular Mass:

61.5kDa





TEL:4006-871-227 Web:www.ybio.net Email:shybio@126.com

Applications: SDS-PAGE; WB; ELISA; IP.

(May be suitable for use in other assays to be determined by the end user.)

## [ USAGE ]

Reconstitute in sterile PBS, pH7.2-pH7.4.

## [ STORAGE AND STABILITY ]

Storage: Avoid repeated freeze/thaw cycles.

Store at 2-8°C for one month.

Aliquot and store at -80°C for 12 months.

Stability Test: The thermal stability is described by the loss rate of the target protein. The loss rate was determined by accelerated thermal degradation test, that is, incubate the protein at 37°C for 48h, and no obvious degradation and precipitation were observed. (Referring from China Biological Products Standard, which was calculated by the Arrhenius equation.) The loss of this protein is less than 5% within the expiration date under appropriate storage condition.

## [ SEQUENCES ]

The sequence of the target protein is listed below.

SLDAFKDLNK KFYSFMKKLI KEHYRTFEKG HIRDITDSLI EHCQDRRLDE NANVQLSDDK  
VITIVFDLFG AGFDTITTAI SWSLMYLVTN PRIQRKIQEE LDTVIGRDRQ PRLSDRPQLP  
YLEAFILETF RHSSFVPFTI PHSTIRDTSL NGFYIPKGHC VFNQWQVNH DQELWGPNE  
FRPERFLTSS GTLDKHLSEK VILFGLGKRK CIGETIGRLE VFLFLAILLQ QMEFNVSPGE  
KVDMPAYGL TLKHARCEHF QVQMRSSGPQ H