



TEL:4006-871-227 Web:www.ybio.net Email:shybio@126.com

YBC313Hu01 10 μ g

Recombinant Antithrombin (AT)

Organism Species: Homo sapiens (Human)

Instruction manual

FOR IN VITRO USE AND RESEARCH USE ONLY

NOT FOR USE IN CLINICAL DIAGNOSTIC PROCEDURES

11th Edition (Revised in May, 2016)

[PROPERTIES]

Source: Prokaryotic expression.

Host: *E. coli*

Residues: His33~Lys464

Tags: N-terminal His-Tag

Tissue Specificity: Liver, Blood.

Subcellular Location: Secreted, extracellular space.

Purity: >98%

Traits: Freeze-dried powder

Buffer formulation: PBS, pH7.4, containing 1mM DTT, 5% trehalose, 0.01% sarcosyl and Proclin300.

Original Concentration: 200ug/mL

Applications: SDS-PAGE; WB; ELISA; IP; CoIP; Purification; Amine Reactive Labeling.

(May be suitable for use in other assays to be determined by the end user.)

Predicted isoelectric point: 6.2

Predicted Molecular Mass: 50.3kDa

Accurate Molecular Mass: 50kDa as determined by SDS-PAGE reducing conditions.

[USAGE]

Reconstitute in PBS (pH7.4) to a concentration of 0.1-1.0 mg/mL. Do not vortex.

[STORAGE AND STABILITY]

Storage: Avoid repeated freeze/thaw cycles.

Store at 2-8°C for one month.

Aliquot and store at -80°C for 12 months.

Stability Test: The thermal stability is described by the loss rate. The loss rate was determined by accelerated thermal degradation test, that is, incubate the protein at 37°C for 48h, and no obvious degradation and precipitation were observed. The loss rate is less than 5% within the expiration date under appropriate storage condition.

[SEQUENCE]

```

- - - - -
                                     HGSPVDIC TAKPRDIPMN
PMCIYRSPEK KATEDEGSEQ KIPEATNRRV WELSKANSRF ATTFYQHLAD
SKNDNDNIFL SPLSISTAFA MTKLGACNDT LQQLMEVFKF DTISEKTSOQ
IHFFFAKLNC RLYRKANKSS KLVSANRLFG DKSLTFNETY QDISELVYGA
KLQPLDFKEN AEQSRAAINK WWSNKTEGRI TDVIPSEAIN ELTVLVLVNT
IYFKGLWWSK FSPENTRKEL FYKADGESCS ASMMYQEGKF RYRRVAEGTQ
VLELPFKGDD ITMVLILPKP EKSLAKVEKE LTPEVLQEWL DELEEMMLVV
HMPRFRIEDG FSLKEQLQDM GLVDLFSPEK SKLPGIVAEG RDDLYVSDAF
HKAFLEVNEE GSEAAASTAV VIAGRSLNPN RVTFKANRPF LVFIREVPLN
TIIFMGRVAN PCVK
  
```

[IDENTIFICATION]

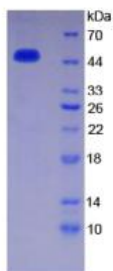


Figure 1. SDS-PAGE