



TEL:4006-871-227 Web:www.ybio.net Email:shybio@126.com

**YBW764Hu01 100ug**

**Recombinant Leucine Rich Repeat Containing Protein 3C (LRRC3C)**

**Organism Species: Homo sapiens (Human)**

***Instruction manual***

**FOR IN VITRO USE AND RESEARCH USE ONLY**

**NOT FOR USE IN CLINICAL DIAGNOSTIC PROCEDURES**

10th Edition (Revised in Jan, 2014)

## **[ PROPERTIES ]**

**Residues: Val42~Val275**

**Tags: Two N-terminal Tags, His-tag and T7-tag**

**Accession: A6NJW4**

**Host: *E. coli***

**Subcellular Location: Membrane; Single-pass membrane protein.**

**Purity: >95%**

**Endotoxin Level: <1.0EU per 1µg (determined by the LAL method).**

**Formulation: Supplied as lyophilized form in 20mM**

**Tris, 150mM NaCl, pH8.0, containing 1mM EDTA, 1mM**

**DTT, 0.01% sarcosyl, 5% trehalose, and preservative.**

**Predicted isoelectric point: 5.9**

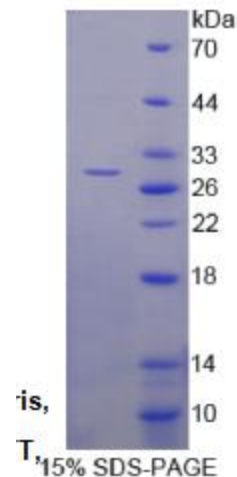
**Predicted Molecular Mass: 28.7kDa**

**Applications: SDS-PAGE; WB; ELISA; IP.**

**(May be suitable for use in other assays to be determined by the end user.)**

## **[ USAGE ]**

**Reconstitute in sterile ddH<sub>2</sub>O.**





## **[ STORAGE AND STABILITY ]**

**Storage: Avoid repeated freeze/thaw cycles.**

**Store at 2-8°C for one month.**

**Aliquot and store at -80°C for 12 months.**

**Stability Test: The thermal stability is described by the loss rate of the target protein. The loss rate was determined by accelerated thermal degradation test, that is, incubate the protein at 37°C for 48h, and no obvious degradation and precipitation were observed. (Referring from China Biological Products Standard, which was calculated by the Arrhenius equation.) The loss of this protein is less than 5% within the expiration date under appropriate storage condition.**

## **[ SEQUENCES ]**

**The sequence of the target protein is listed below.**

**VPSPQVPPR GCYVAKEAGE RTFRCSQAGL SAVPSGIPND TRKLYLDANQ LASVPAGAFQ  
HLPVLEELD SHNALAHL SG AAFQGLEGTL RHLDSL ANQL ASVPVEAFVG LQIQVNLSAN  
PWHCD CALQEVL RQVRLVPGTGTGIVCGSGARPD LVGQEFLLLAGEEELC  
GSGWGGARRS TDVALLVTMG GWLTLMVAYL VHYVWQNRDE TRRSLKRAPV LPVRSEDSSI  
LSTVV**