



TEL:4006-871-227 Web:www.ybio.net Email:shybio@126.com

YB83549Hu01 100µg

Wingless Type MMTV Integration Site Family, Member 5A (WNT5A)

Organism: Homo sapiens (Human)

Instruction manual

FOR IN VITRO USE AND RESEARCH USE ONLY

NOT FOR USE IN CLINICAL DIAGNOSTIC PROCEDURES

6th Edition (Revised in March, 2013)

[PROPERTIES]

Residues: Ile62~Lys380 (Accession # P41221), with two N-terminal Tags, His-tag and GST-tag.

Host: *E. coli*

Subcellular Location: Secreted, extracellular space, extracellular matrix.

Purity: >95%

Endotoxin Level: <1.0EU per 1µg (determined by the LAL method).

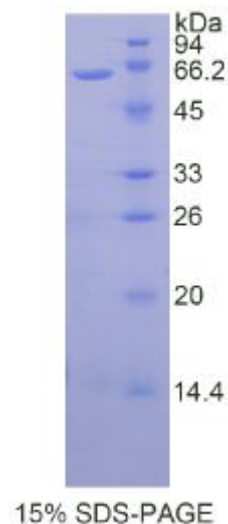
Formulation: Supplied as lyophilized form in PBS, pH7.4, containing 5% sucrose, 0.01% sarcosyl.

Predicted isoelectric point: 8.5

Predicted Molecular Mass: 62.8kDa

Applications: SDS-PAGE; WB; ELISA; IP.

(May be suitable for use in other assays to be determined by the end user.)



[USAGE]



Reconstitute in sterile PBS, pH7.2-pH7.4.

[STORAGE AND STABILITY]

Storage: Avoid repeated freeze/thaw cycles.

Store at 2-8°C for one month.

Aliquot and store at -80°C for 12 months.

Stability Test: The thermal stability is described by the loss rate of the target protein. The loss rate was determined by accelerated thermal degradation test, that is, incubate the protein at 37°C for 48h, and no obvious degradation and precipitation were observed. (Referring from China Biological Products Standard, which was calculated by the Arrhenius equation.) The loss of this protein is less than 5% within the expiration date under appropriate storage condition.

[SEQUENCES]

The target protein is fused with two N-terminal Tags, His-tag and GST-tag, its sequence is listed below.

MRNKKFELGL EFPNLPYYID GDVKLTQSMA IIRYIADKHN MLGGCPKERA EISMLEGAVL
DIRYGVSRIA YSKDFETLKV DFLSKLPEML KMFEDRLCHK TYLNGDHVTH PDFMLYDALD
VVLYMDPMCL DAFPKLVCFK KRIEAIQID KYLKSSKYIA WPLQGWQATF GGGDHPKSD
GSTSGSGHHH HHHSAGLVPR GSTAIGMKET AAKFERQHM DSPDLGTLEV LQQ
GPLGSEF- IIGAQLCS QLAGLSQGQK KLCHLYQDHM QYIGEGAKTG IKECQYQFRH
R R W N C S T V D N T S V F G R V M Q I G S R E T A F T Y A V S A A G V V N A M S R A C R E G E L S
TCGCSRAARP KDLPRDWLWG GCGDNIDYGY RFAKEFVDAR ERERIHAKGS YESARILMNL
H N N E A G R R T V Y N L A D V A C K C H G V S G S C S L K T C W L Q L A D F R K V G D A L K E K Y
DSAAAMLNS RGKLVQNSR FNSPTTQDLV YIDPSDYCV RNESTGSLGT QGRLCNKTSE
GMDGCELMCC GRGYDQFKTV QTERCHCKFH WCCYVKCKK TEIVDQFVCK