



TEL:4006-871-227 Web:www.ybio.net Email:shybio@126.com

**YBA556Hu01 100µg**  
**Recombinant Keratin 7 (KRT7)**  
**Organism Species: Homo sapiens (Human)**

***Instruction  
manual***

**FOR IN VITRO USE AND RESEARCH USE ONLY**  
**NOT FOR USE IN CLINICAL DIAGNOSTIC PROCEDURES**

9th Edition (Revised in Jul,  
2013)

**[ PROPERTIES ]**

**Residues: Glu91~Lys394 (Accession # P08729), with two  
N-terminal Tags, His-tag and S-tag.**

**Host: *E. coli***

**Subcellular Location: Cytoplasm.**

**Purity: >95%**

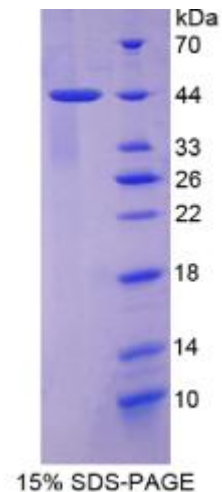
**Endotoxin Level: <1.0EU per 1µg (determined by the  
LAL method).**

**Formulation: Supplied as lyophilized form in PBS, pH7.4,  
containing 5% sucrose, 0.01% sarcosyl.**

**Predicted isoelectric point: 5.0**

**Predicted Molecular Mass: 40.5kDa**

**Accurate Molecular Mass: 44kDa as determined by SDS-PAGE reducing**



The possible reasons that the actual band size differs from the predicted are as follows:  
conditions.

**Applications: SDS-PAGE; WB; ELISA; IP.**

**(May be suitable for use in other assays to be determined by the end user.)**

**Note:**

1. Splice variants: Alternative splicing may create different sized proteins from the same gene.
2. Relative charge: The composition of amino acids may affects the charge of the protein.



TEL:4006-871-227 Web:www.ybio.net Email:shybio@126.com

3. Post-translational modification: Phosphorylation, glycosylation, methylation etc.
4. Post-translation cleavage: Many proteins are synthesized as pro-proteins, and then cleaved to give the active form.
5. Polymerization of the target protein: Dimerization, multimerization etc.

## **[ USAGE ]**

Reconstitute in sterile PBS, pH7.2-pH7.4.

## **[ STORAGE AND STABILITY ]**

Storage: Avoid repeated freeze/thaw cycles.

Store at 2-8°C for one month.

Aliquot and store at -80°C for 12 months.

Stability Test: The thermal stability is described by the loss rate of the target protein. The loss rate was determined by accelerated thermal degradation test, that is, incubate the protein at 37°C for 48h, and no obvious degradation and precipitation were observed. (Referring from China Biological Products Standard, which was calculated by the Arrhenius equation.) The loss of this protein is less than 5% within the expiration date under appropriate storage condition.

## **[ SEQUENCES ]**

The target protein is fused with two N-terminal Tags, His-tag and S-tag, its sequence is listed below.

MHHHHHHSSG LVPRGSGMKE TAAAKFERQH MDSPDLGTDD DDKAMADIGS EF-  
ESEQIKTLNN KFAFIDKVR FLEQQNKLE TKWTLLEQK SAKSSRLPDI FEAQIAGLRG  
QLEALQVDGG RLEAELRSMQ DVVEDFKNKY EDEINHRATA ENFVVLKGD VDAAYMSKVE  
LEAKVDALND EINFLRTLNE TELTELQSQI SDTSVVLSD NSRSLDLGI IAEVKAQYEE  
MAKCSRAEAE AWYQTKFETL QAQAGKHGDD LRNTRNEISE MNRAIQLQA EIDNIKNQRA  
KLEAAIAEAE ERGELALKDA RAKQEELEAA LQRGKQDMAR QLREYQELMS VKLALDIEIA  
TYRK