



TEL:4006-871-227 Web:www.ybio.net Email:shybio@126.com

YB95322Hu01

**Carboxypeptidase E (CPE)**

**Organism: Homo sapiens (Human)**

*Instruction manual*

FOR IN VITRO USE AND RESEARCH USE ONLY

NOT FOR USE IN CLINICAL DIAGNOSTIC PROCEDURES

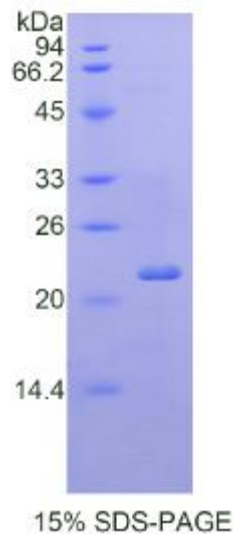
5th Edition (Revised in January,  
2013)

[ **DESCRIPTION** ]

**Protein Names:** Carboxypeptidase E

**Synonyms:** CPE

**Human CPE**



**Species:** Human

**Size:** 100μg

**Source:** *Escherichia coli*-derived

**Subcellular Location:** Cytoplasmic vesicle,  
secretory vesicle membrane; Peripheral  
membrane protein. Secreted.



TEL:4006-871-227 Web:www.ybio.net Email:shybio@126.com

### [ PROPERTIES ]

**Residues:** Ala318~Phe476 (Accession # P16870), with N-terminal His-Tag.

**Grade & Purity:** >95%, 22kDa as determined by SDS-PAGE reducing conditions.

**Formulation:** Supplied as lyophilized form in PBS, pH 7.4, containing 5% sucrose, 0.01% sarcosyl.

**Endotoxin Level:** <1.0 EU per 1  $\mu$ g (determined by the LAL method).

**Applications:** SDS-PAGE; WB; ELISA; IP.

(May be suitable for use in other assays to be determined by the end user.)

**Predicted Molecular Mass:** 19.7kDa

**Predicted isoelectric point:** 5.0

### [ PREPARATION ]

Reconstitute in sterile PBS, pH7.2-pH7.4.

### [ STORAGE AND STABILITY ]

**Storage:** Avoid repeated freeze/thaw cycles.

Store at 2-8°C for one month.

Aliquot and store at -80°C for 12 months.

**Stability Test:** The thermal stability is described by the loss rate of the target protein. The loss rate was determined by accelerated thermal degradation test, that is, incubate the protein at 37°C for 48h, and no obvious degradation and precipitation were observed. (Referring from China Biological Products Standard, which was calculated by the Arrhenius equation.) The loss of this protein is less than 5% within the expiration date under appropriate storage condition.



TEL:4006-871-227 Web:www.ybio.net Email:shybio@126.com

### [ SEQUENCES ]

The target protein is fused with N-terminal His-Tag, its sequence is listed below.

MGHHHHHSGSEF- AWY SVPGGMQDFN YLSSNCFEIT VELSCFKFPP EETLKTYWED

NKNSLISYLE QIHRGVKGFV RDLQGNPIAN ATISVEGIDH DVTSKDG DY WRLLIPGNYK

LTASAPGYLA ITKKVAVPYS PAAGVDFELE SFSEKKEEK EELMEWWKMM SETLNF