



TEL:4006-871-227 Web:www.ybio.net Email:shybio@126.com

YBA037Mu01 10 μ g
Recombinant Fibronectin (FN)
Organism Species: *Mus musculus* (Mouse)

Instruction manual

FOR IN VITRO USE AND RESEARCH USE ONLY
NOT FOR USE IN CLINICAL DIAGNOSTIC PROCEDURES

10th Edition (Revised in Jan,
2014)

[PROPERTIES]

Residues: Gly2117~Leu2236

Tags: N-terminal His-Tag

Accession: P11276

Host: *E. coli*

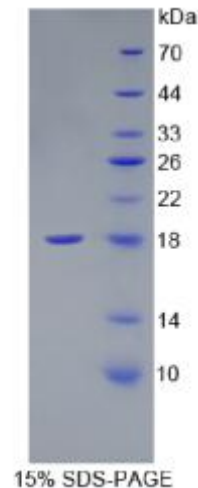
Subcellular Location: Secreted, extracellular
space, extracellular matrix.

Purity: >90%

Endotoxin Level: <1.0EU per 1 μ g (determined by
the LAL method).

Formulation: Supplied as lyophilized form in PBS,
pH7.4, containing 5% sucrose, 0.01% sarcosyl.

Predicted isoelectric point: 5.4



The possible reasons that the actual band size differs from the predicted are as follows:

Predicted Molecular Mass:

14.8kDa

Accurate Molecular Mass: 18kDa as determined by SDS-PAGE reducing
conditions. Applications: SDS-PAGE; WB; ELISA; IP.

(May be suitable for use in other assays to be determined by the end user.)



Note:

1. Splice variants: Alternative splicing may create different sized proteins from the same gene.
2. Relative charge: The composition of amino acids may affects the charge of the protein.
3. Post-translational modification: Phosphorylation, glycosylation, methylation etc.
4. Post-translation cleavage: Many proteins are synthesized as pro-proteins, and then cleaved to give the active form.
5. Polymerization of the target protein: Dimerization, multimerization etc.

[USAGE]

Reconstitute in sterile PBS, pH7.2-pH7.4.

[STORAGE AND STABILITY]

Storage: Avoid repeated freeze/thaw cycles.

Store at 2-8°C for one month.

Aliquot and store at -80°C for 12 months.

Stability Test: The thermal stability is described by the loss rate of the target protein. The loss rate was determined by accelerated thermal degradation test, that is, incubate the protein at 37°C for 48h, and no obvious degradation and precipitation were observed. (Referring from China Biological Products Standard, which was calculated by the Arrhenius equation.) The loss of this protein is less than 5% within the expiration date under appropriate storage condition.

[SEQUENCES]

The sequence of the target protein is listed below.

GYDT ENGIQLPGTT HQPSVGGQM IFEEHGFRRR TPPTAATPVR LRPRPYLPNV
DEEVQIGHVP RGDVDYHLYP HVPGLNPNAS TGOEALSQTT ISWTPFQESS EYIISCQPVG
TDEEPL

[REFERENCES]



TEL:4006-871-227 Web:www.ybio.net Email:shybio@126.com

1. Pankov R., *et al.* (2002) *Journal of Cell Science* 115 (Pt 20): 3861 - 3.
2. Williams CM., *et al.* (2008) *Cancer Research* 68 (9): 3185 - 92.
3. Mao Y., *et al.* (2005) *Matrix biology : journal of the International Society for Matrix Biology* 24 (6): 389 - 99.
4. Erickson HP. (2002) *Journal of muscle research and cell motility* 23 (5 - 6): 575 - 80.
5. Sechler JL., *et al.* (1997) *Molecular Biology of the Cell* 8 (12): 2563 - 73.